

MB Swindon AGM 2016

Agenda

1. Introduction - welcome and format of meeting
2. Review of the year
 - a. Ride events
 - b. Ladies activities
 - c. Club events
 - d. Membership survey
 - e. Achievements in 2015
 - f. Croft Trail
 - g. Finances
3. Intro to club strategy
4. Amendments to constitution
5. Election
6. Discussion

B

R

E

A

K

Special guest speaker

Nick Walmsley
Programme Manager
National Trust

Ride events

























































Ladies Activities



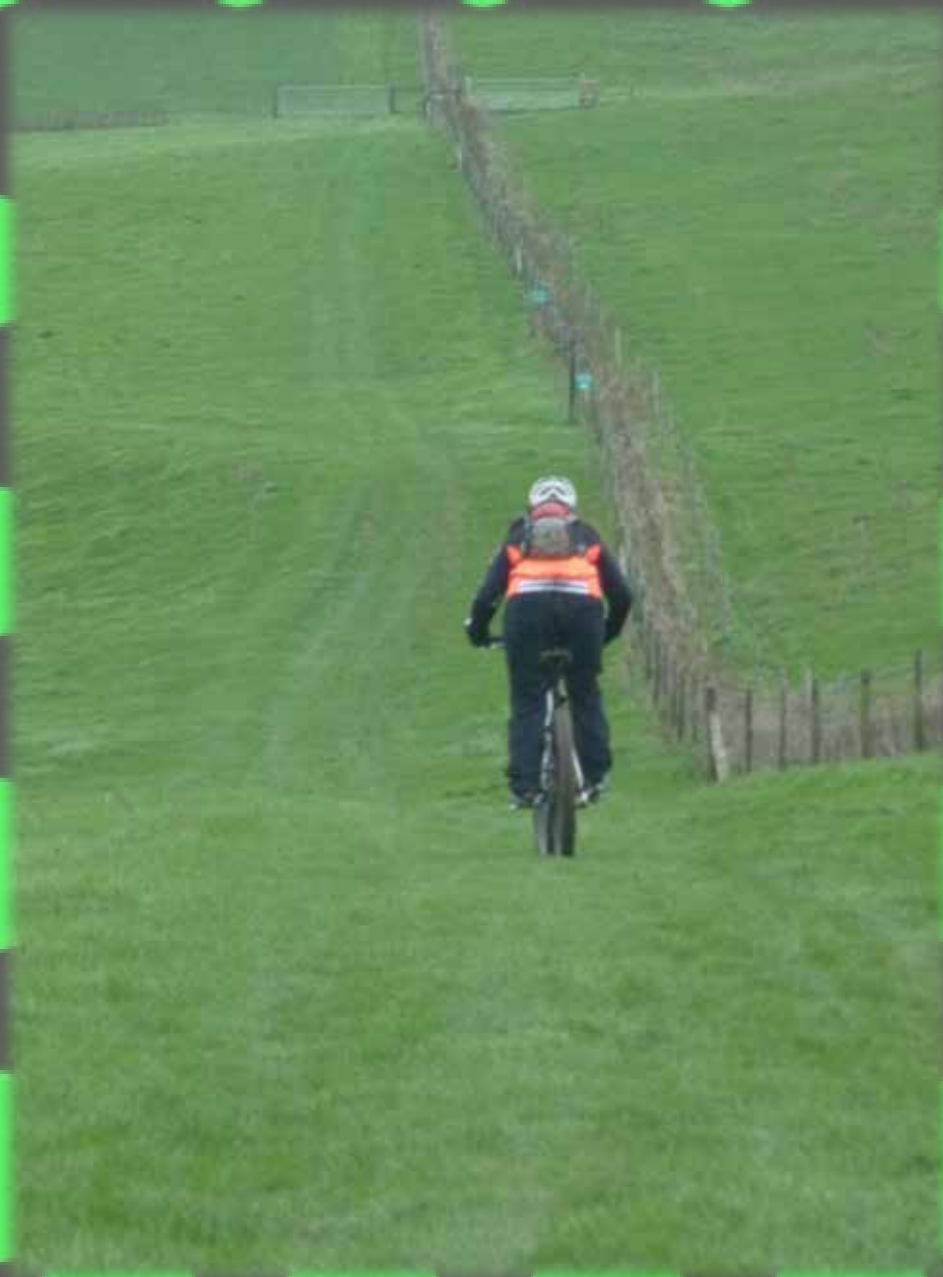




















Club events



And when we're not riding bikes ...



Croft Trail
Open Day
21st June



And when we're not riding bikes ...



Mince Pies
13th December

Christmas Meal
(in January!!)



And when we're not riding bikes ...

Supporting the club members at Bikefest and Oktoberfest



Membership Survey

- Survey launched in Spring 2015
- 86 people completed

35% of members have been with the club for over 3 years

61% wanted to meet fellow mountain bikers

73% said that the people of MB Swindon were very friendly and welcoming

29% heard about the club from the website, 15% from Facebook ; with 23% hearing from friends

90% rated MB Swindon as good or excellent

Membership Survey

Always made to feel welcome from leaders and other riders.....I always pick novice rides and the slowest person is never made to feel bad for holding up the ride...smiles all round from everyone, a pleasure to be a part of any ride

I have met a lot of new friends and been to places I have never heard of.

£10 membership is outstanding VFM. As a newbie the price made me feel I had nothing to lose.

met some of the members as they arrived back from a ride on a Wednesday evening, Saturday I had joined the club and Sunday I was out on a ride and they couldn't have been more welcoming

Membership Survey

Club does well

Club discounts
Organised rides
Croft Trail
Training
Ride reports

Club could do better

Social events
More ladies rides
Build diary
More events at Croft

Achievements in 2015



Club travel
mugs



New club
shirts



Achievements in 2015

Lots of Race Team
podiums and trophies



Achievements in 2015

Case Study 2: Mountain Biking Swindon

Initially started by the Nationwide Cycling Club and a £10,000 Lottery grant, a spade and a wheel barrow, Mountain Biking Swindon (MBS) now has 350 members and a permanent, open to all, base in Croft Road Country Park. The Croft mountain bike (MTB) trail was short and incomplete until the two founding members discovered it and saw the potential. With the initial premise of simply building a place to ride and enjoy for themselves, without knowing what it could become.

Whilst built on land provided by Swindon Borough Council, the trail is managed by MBS. It has been built entirely by volunteers and almost entirely self-funded through membership fees (£10 per year), MTB training courses and small social events such as BBQs. 'Build days' (construction of tracks to Forestry Commission standards) attract good numbers of volunteers but relies on the self-taught building skills of members to make efficient use of materials and manage risk.

The waymarked trails at Croft Country Park offer both a family/beginner off-road trail (Blue), and a more technical trail (Red) with features for the more experienced cyclist or those wishing to improve their skills. The club also offers club rides. The regular Friday Night Ride has been running since later summer 2009 and has not missed a Friday since. Up to 35 people have been known to join single rides. Again, the emphasis is on beginners with 'novice friendly' rides a prominent fixture in the calendar. Many novices that try out the trails or rides end up being regular cyclists – the ultimate aim of the Framework.

Even though races are organised for more experienced/faster riders, with their own sponsored professionals, the current club chairman and founding member Phil Mayger highlights the club's philosophy perfectly "I would much rather have a disappointed experienced cyclist than a disappointed novice". This accessibility, by a wide range of abilities, is reflected by the club being British Cycling approved.

Open all year round, easily accessible and free to use, The Croft MTB trail is a shining example of what can be achieved with minimal funding and the enthusiasm and commitment of just a few people. The club has grown massively and built a cycling 'scene' and community only made possible by the existence of the Croft MTB trails as somewhere to ride with likeminded people. Interested? Visit: www.mbswindsor.co.uk



DRAFT SWINDON CYCLING FRAMEWORK

Everyday Cycling for Everybody

2015—2026



SWINDON
Borough Council

CH2MHILL

Swindon
Borough Council

Input into and inclusion of the club/trail as a case study in the SBC Cycling Framework

Achievements in 2015

Providing marshals
and sweepers for the
Macmillan Castles
Ride



Achievements in 2015



Inclusion in Brendon Fairclough
and Loemy shredding videos

Brendan Fairclough shares some footage of his new trail

By Steven Santini - October 25, 2015



Share on Facebook



Tweet on Twitter

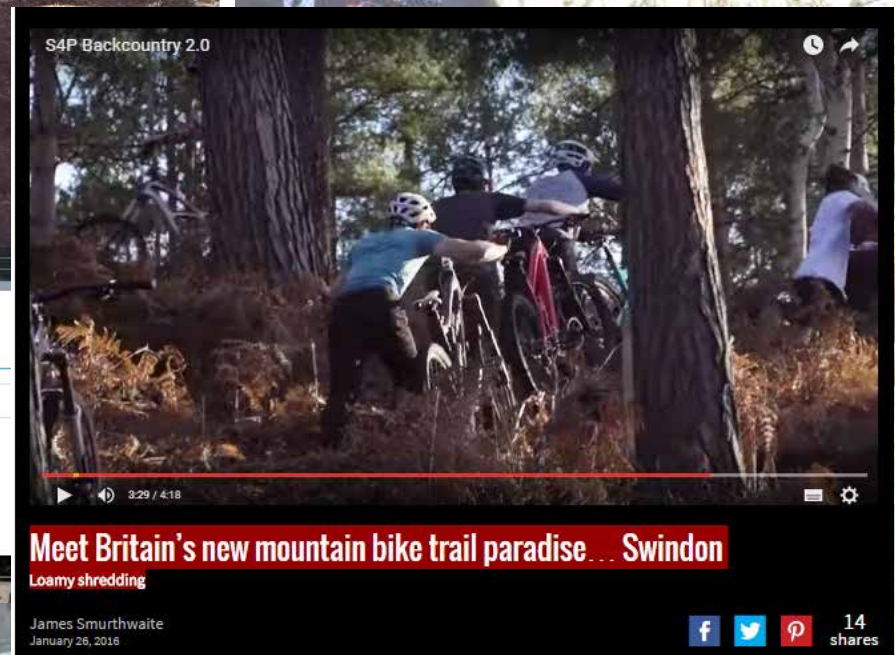


Brendan Fairclough shares a new mtb trail he and his mates built in Swindon. Yes you heard us right, Swindon, in the UK. Swindon is not exactly renowned for its mountain

Subscribe

Email Address

Subscribe



Croft Trail



Finances

MB Swindon - Income and Expenditure 2015

Income

Membership Fees		2729.37
Training Courses		1071.14
Clothing + Other Merch		610.00
Food & Drink		305.40
Sponsorship		1100.00
Misc Income		3.50
		<u>5819.41</u>

Expenditure

Administration	Meeting Fees, Affiliation Fees, Web Hosting, Stationary, Postage	704.55
Training	MIAS Memberships	104.00
Race Team	Race Shirts, Entry Fees	1412.6
Croft Trail	Materials	502.65
Capital Costs	Machinery, Tools, noticeboard, tables, Bibs	1075.08
Meetings and Catering	Food costs, supplies for BBQ	359.19
Shirts And Merchandise	Purchase of Shirts, Setup costs	3060.86
		<u>7418.93</u>
Cash Balance	Co-Operative Bank + Nochex Account	5138.52
Assets Held (Est.)	Tools, Machinery, Event Equipment	2100.00
Stock	Shirts, Mugs	1755.00

Finances

2016 Income & Expenditure Estimate


Income

Membership Fees	2800.00
Training Courses	1400.00
Clothing + Other Merch	350.00
Food & Drink	300.00
Sponsorship	1100.00
	<u>5950</u>

Expenditure

Administration	Affiliation Fees, Web Hosting, Stationary, Postage	600
Training	MIAS Memberships, training.	750.00
Race Team	Entry Fees	500
Croft Trail	Materials	3000
Capital Costs	Tools	300
Meetings and Catering	Room + Food costs, supplies for BBQs	350
Shirts And Merchandise	Purchase of merchandise	300
		<u>5800</u>

Club Strategy 2016



Survey Results



Ride Leaders

Ladies Forum



- Membership
- Rides and Events
- Training
- Volunteer Workforce
- Race Team
- Marketing, PR and Sponsors
- Communication
- Links to other organisations
- Social
- Finances
- Club Equipment
- Croft Trail



Club Committee

Club Matters Tool



20th March

the Club constitution

- Amendments to the constitution
- Reasons behind constitutional amendments
- Proposed amendments
- Vote

Committee Elections

The background of the slide is a photograph of a car park. A silver hatchback car is parked in the center, with its rear facing the camera. The license plate is 'WP03 SFV'. To the left of the car, a bicycle is leaning against a white car. To the right, another bicycle is lying on the ground. The scene is outdoors with green grass and trees in the background.

Chairperson

- Chris Hopkinson

Club / Membership Secretary

- Kat Ratcliffe

Ladies Officer

- Debbie Davies

Awards Ceremony

Most prolific
ride leader in
2015



Awards Ceremony

Support on
community
events



Awards Ceremony

Most travelled
MB Swindon
travel mug



Awards Ceremony

Support for
club
communication



Awards Ceremony

Most
optimistic line
on club ride



Awards Ceremony

Best
attendance at
rides



Awards Ceremony

Best piece of
sports kit for
2015/16



Discussion

Find out
more about
any items

Your chance
to ask
questions

Share your
thoughts
about the
club